



ACQUAZZONE



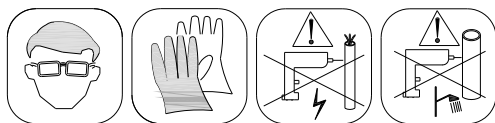
INSTRUCTION

Alexandra 90, 100

SIZE: 90x90x220sm

SIZE: 100x100x220sm



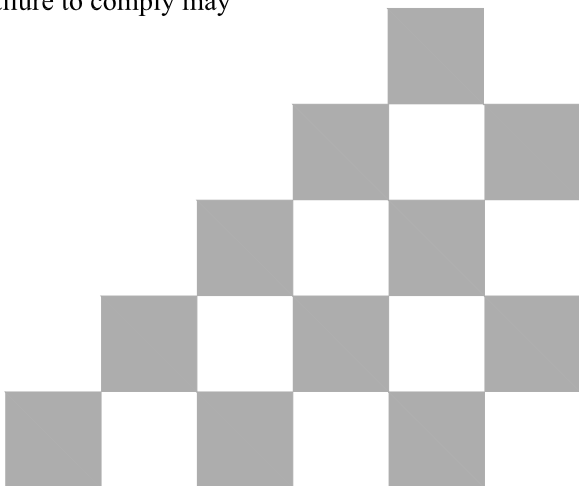


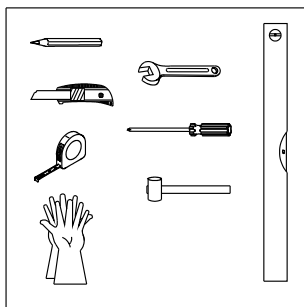
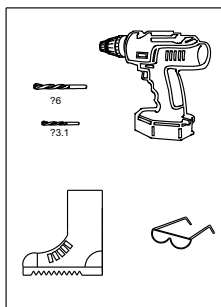
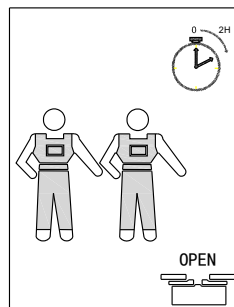
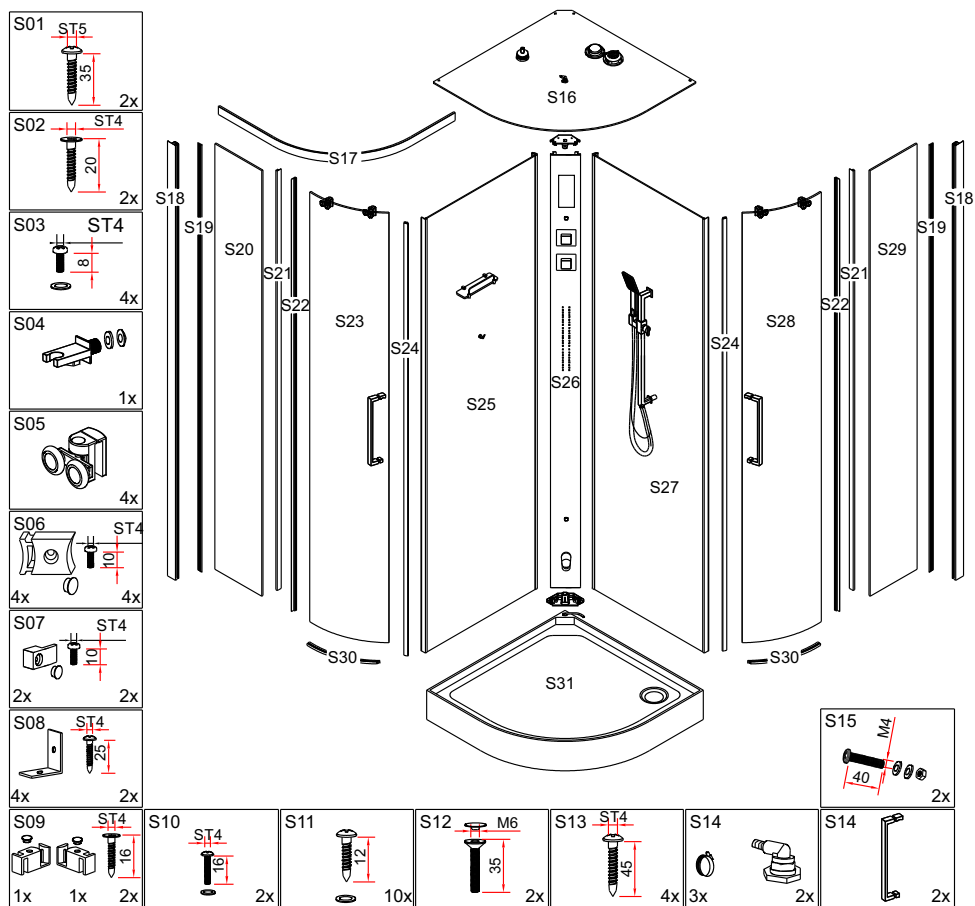
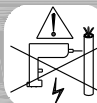
We appreciate your choosing of our shower products, and wish you a pleasant experience with our products and service. Please read Instruction carefully before installation.

IMPORTANT

Please check the shower enclosure for transport damage and completeness before installation. Complaints made following installation cannot be accepted.

Please read carefully the following instructions before installing your shower enclosure to ensure safe and proper use and avoid any injury to either the installer or user .Failure to comply may invalidate your guarantee.

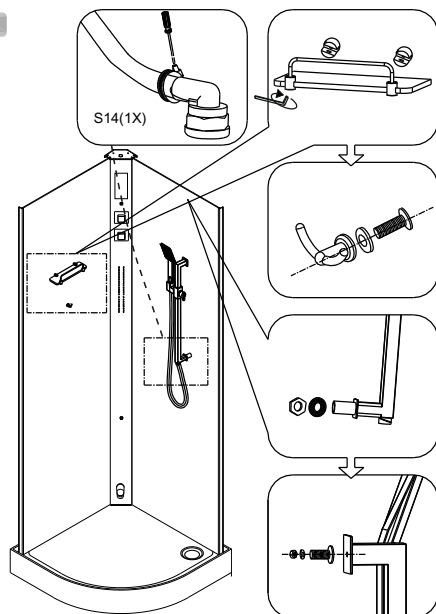




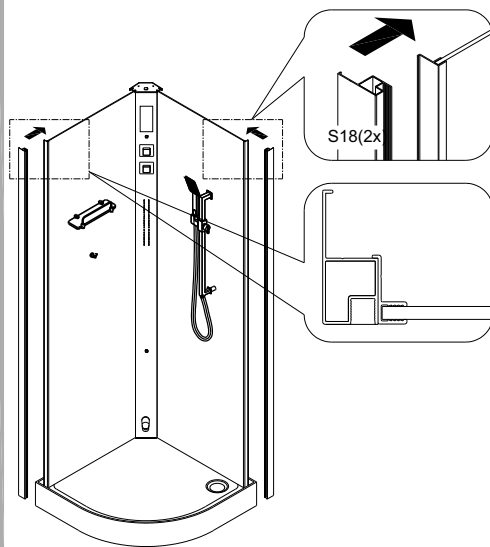




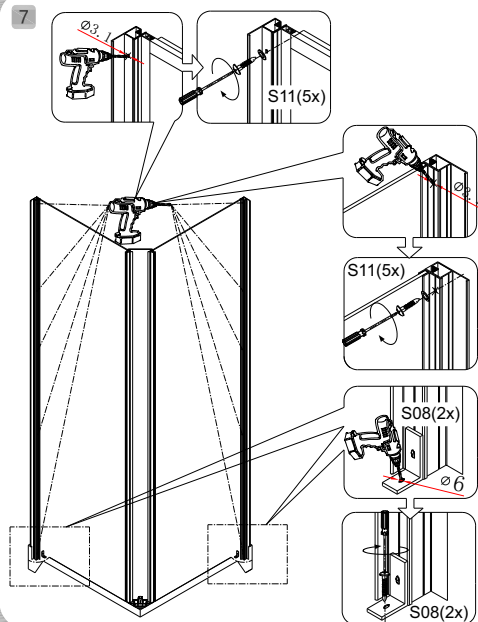
5



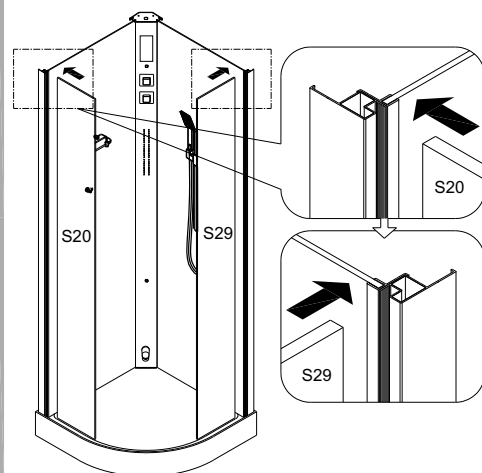
6



7

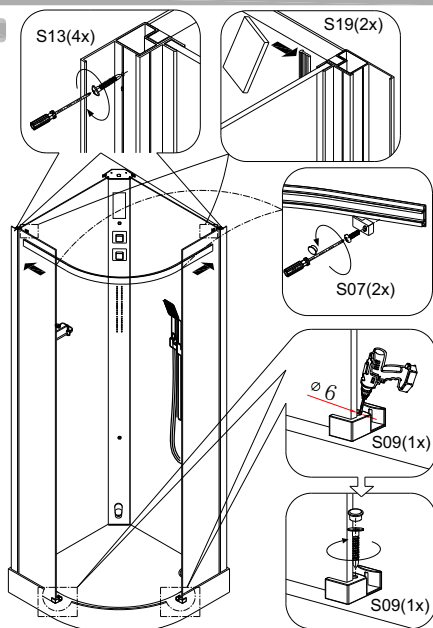


8

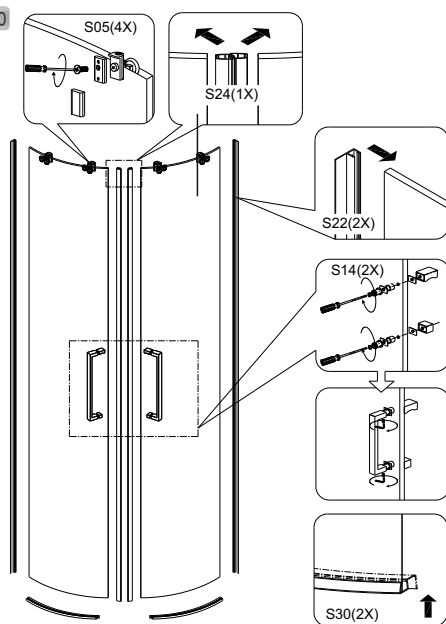




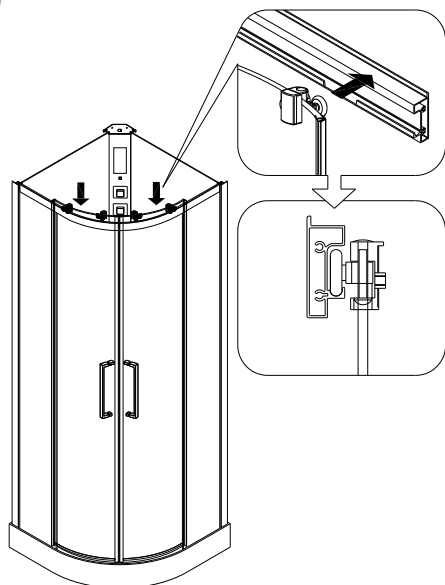
9



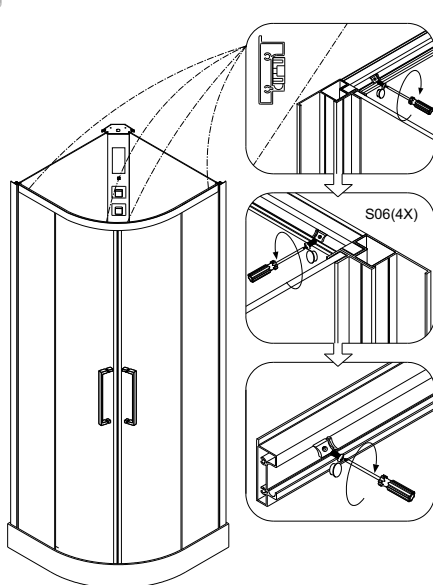
10



11

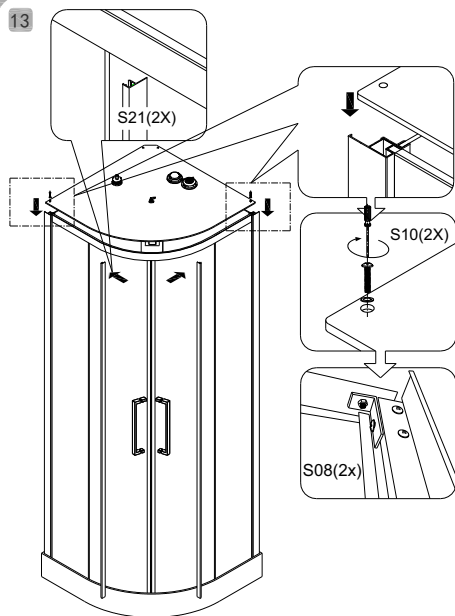


12

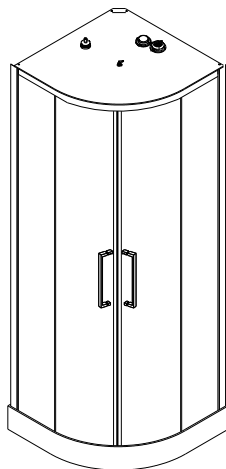




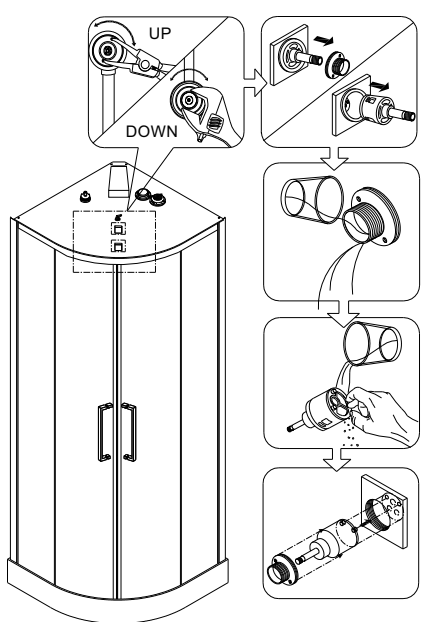
13



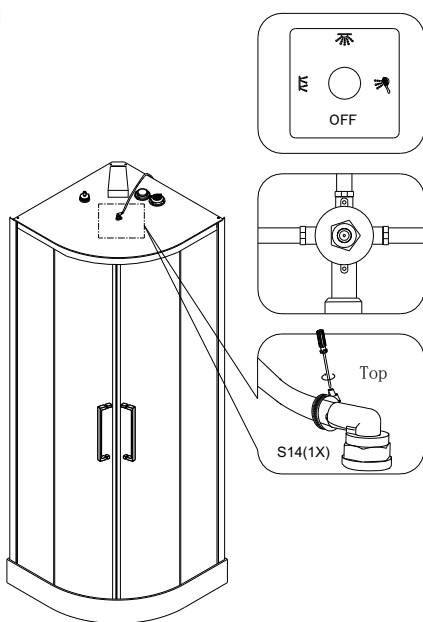
14



15



16



One-Function Instruction:











This Shower control system contains following functions:

1. **Display:** Volume range and the working condition of fan, light etc.
2. **FM digital radio:** The frequency range is 87.5~108MHz; user can manually or automatically search channels, adjust the volume, and store channels.

Two-Key Keyboard Diagram:





Keyboard contains 10 buttons, functions are as follows:


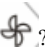
- | | |
|---|----------------------|
|  | Power On/off |
|  | Light |
|  | Fan |
|  | Lock & Unlock |
|  | Radio |
|  | Parameter decrease |
|  | Parameter Increase |
|  | Volume |
|  | Store/Search Channel |
|  | Frequency |

Three-Operation Instruction:


1. Power On/Off:

Press ?  ? button, the system starts, ceiling light is on, room temperature will be displayed, and system is standby other functions being open; Press ?  ? button again, the system is off.


2. Fan Function:




When system is on, press ?  ? button, the fan works, the fan sign will flash; Press ?  ? button again to turn off the fan, at the same time, the fan sign is off.




3. Light Function:



When system is on, the ceiling light is on; press ?  ? button again, the ceiling light is off. When light is on, light sign will display.


4. FM Digital Radio:


On/Off: When system is on, press  button to enter into radio mode, LCD will display present frequency.

Tune: press  button and select tune mode, press  ,  to adjust the frequency, LCD will display present frequency (87.5~108MHz) .

Volume Adjustment: press  button and select volume mode, press  ,  to adjust volume, LCD will display present volume (0-10).

Read Channels: when radio is on, and without any setting, press  ,  to read stored channels(0-15)

Store Channels: Press  button and store the present frequency on the position of present channel.

Auto Search & Store channels: long press on  button for 2 seconds to search channel automatically, which will scan frequency from 87.5MHZ to 108.0MHZ, and store the frequency of station signal automatically on the position 0-15 in turn.

5. Lock/Unlock Function:



When system is on, and press button for 1.5second to lock the keyboard. Press this key again for 1.5second, to unlock the keyboard. If without any pressing on the keyboard for 15 seconds, the system will automatically be locked,

Four-Technical Specification:

Working Condition and characteristic				
Rated Voltage	AC220V	Rated Frequency	50/60Hz	
Rated Current	<1A	Rated Power	20W	
Insulance	>20M	Waterproof Level	IPX4	
Load Parameter				
Load	Rated Voltage	Rated Frequency	Rated Power	Others
Ceiling light	AC12V		5W	
Fan	DC12V		2.5W	
Speaker			8W	

Dimensions		
Keyboard	Length*Width*High 150*86*49.5	Unit: mm
Control Box	NONE	

Remarks:

1. Without the permission of our technical department, please don?t enlarge the load power.
- 2.This product follows national standard 《Safety of Household and similar electrical appliances》 GB4706.1-2005;
3. The installation of keyboard is attached in the appendix

Five-Malfunction Analysis:

During the operation of this product, if any abnormal malfunctions happen, please ask qualified technician to refer following analysis to remove malfunctions

Malfunctions Type	Analysis (Solutions)
Can?t turn on the system, no display on the screen	<div>1. No power connection (Connect power supply)</div> <div>2. Check whether there is output AC12V from the transformer secondary, if no voltage, check whether there is AC220V on primary, if there is 220V voltage, then transformer is broken.</div> <div>3. If there is AC12V output, then control system is broken.(replace)</div>

Light, Fan don?t work	<ol style="list-style-type: none"> 1. Check the output voltage of light (AC12V) and fan (DC 12V), if voltages are ok, then light or fan is broken. (Replace) 2. If there is no voltage on output of light and fan, then control system is broken.
Too much noise, less Receipt Channels	<ol style="list-style-type: none"> 1. The Antenna is not in a good position. (Put it on the best position) 2. Electric box is broken. (Replace it)

Six-Special Declaration:

When this product needs be repaired, please contact the qualified technician from dealer, otherwise it will be not free.

During the operation, be careful about the short circuit of fan and light, it will damage transformer permanently.

Appendix: Installation of Keyboard

